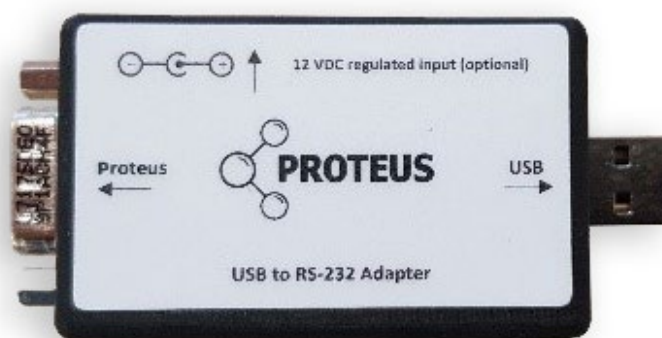


Connecting a Proteus via an RS-232 Adapter

Connecting your Proteus to your PC via an RS232 can occasionally be hindered by USB driver issues. There are two versions of the RS232 USB adapter in circulation; a serial version, and an RS232GT chipset version. Both are functionally identical for the purposes of connecting to your Proteus.

To check the version you have connect your adapter to the USB port (either directly or using your USB cable) and checking Device Manager on your PC (type "dev" in to the search on your taskbar). Under "Ports (COM & LPT)" check whether your adapter is named "Prolific USB-to-Serial Comm Port (COMX)" or "Prolific PL2303GT USB Serial PORT (COMX)"

Common faults when frequently disconnecting and reconnecting the Proteus can be resolved by following the "Connection Sequence for RS232 Adapters" section at the end of this document.



Prolific USB-to-Serial Comm Port

This type of adapter identifies by the USB (COM) port and should never require any additional action in order to connect.

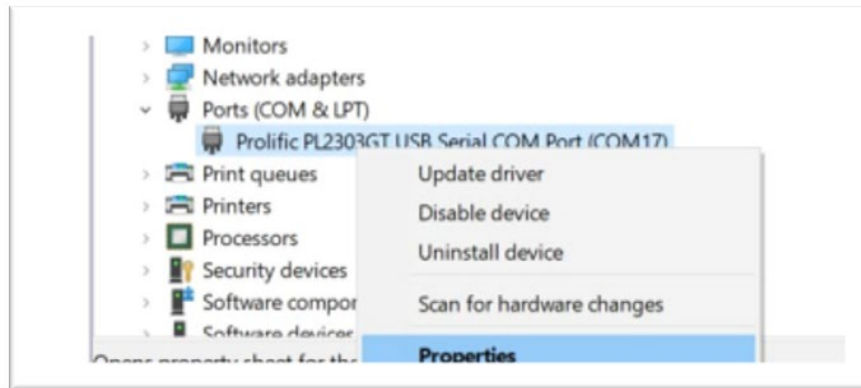
Prolific PL2303GT USB Serial PORT

This adapter is assigned its own COM identity by the PC. Adapters with a PL2303GT type mean that some users may need to adjust settings and process to successfully connect. Please follow this guide carefully if you experience issues with your "USB>RS-232>Data/Marine cable" connection.

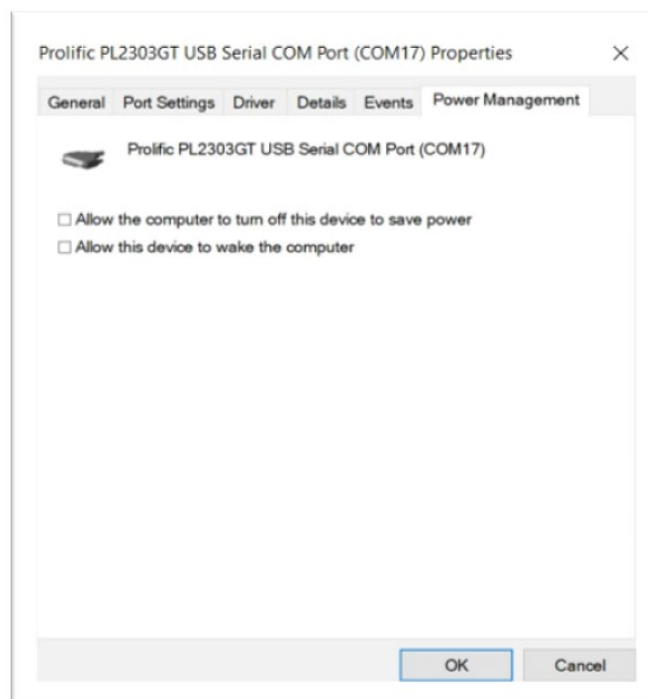
Windows 11

This first process resolves the majority of Windows 11 issues.

1. From Device Manager and drop the menu for “Ports (COM & LPT)”
2. Right click on the “Prolific PL2303GT USB Serial COM Port” option and select “Properties”



3. Open the Power Management tab
4. Uncheck “Allow the computer to turn off this device to save power” and “Allow this device to wake the computer” and select “OK”.



5. Disconnect and then reconnect the RS232 adapter.

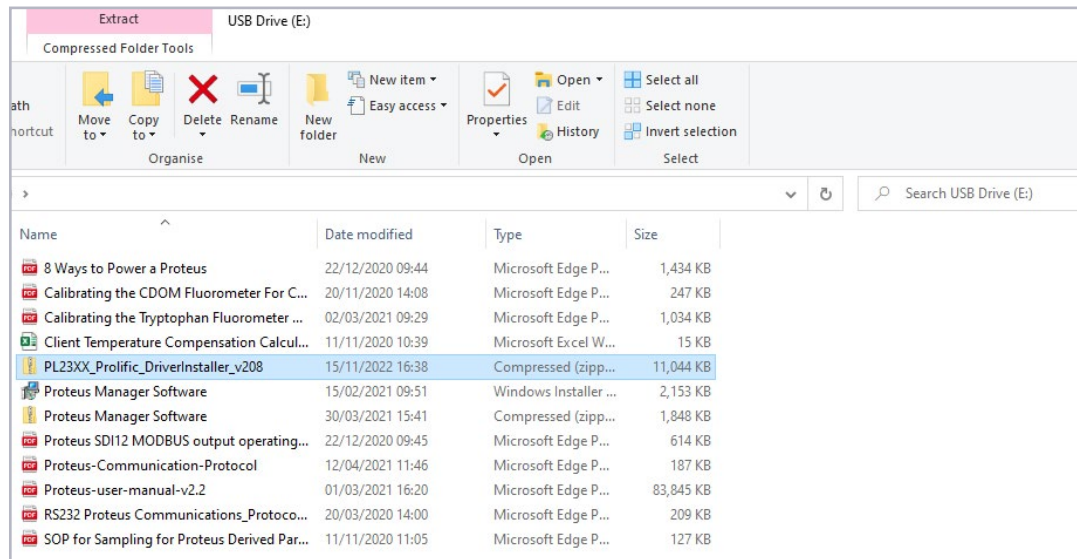
The adapter should now function. If it fails to do so please also complete the following process;

1. Follow the steps above to navigate to the Ports section of Device Manager.
2. Right click on the device, and select “Update Drivers”.

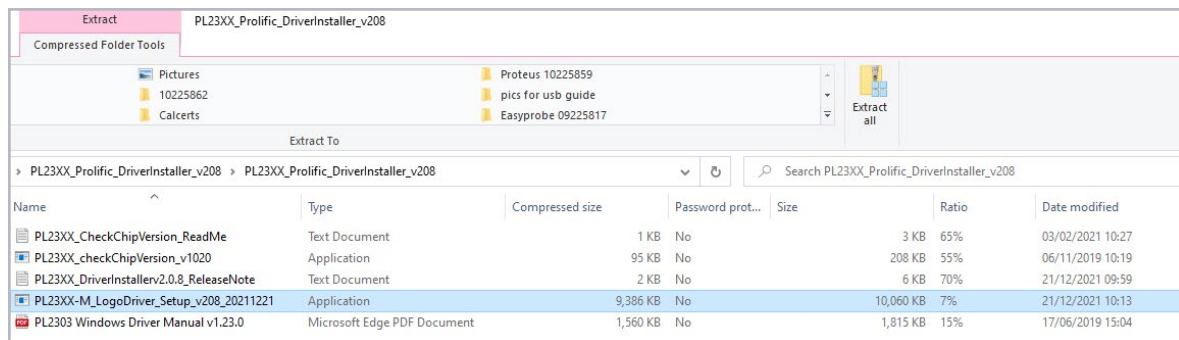
If you still experience issues please contact Proteus Support.

Windows 10

1. On your Proteus USB stick select and extract the folder “PL23XX_Prolific_DriverInstaller_v208”

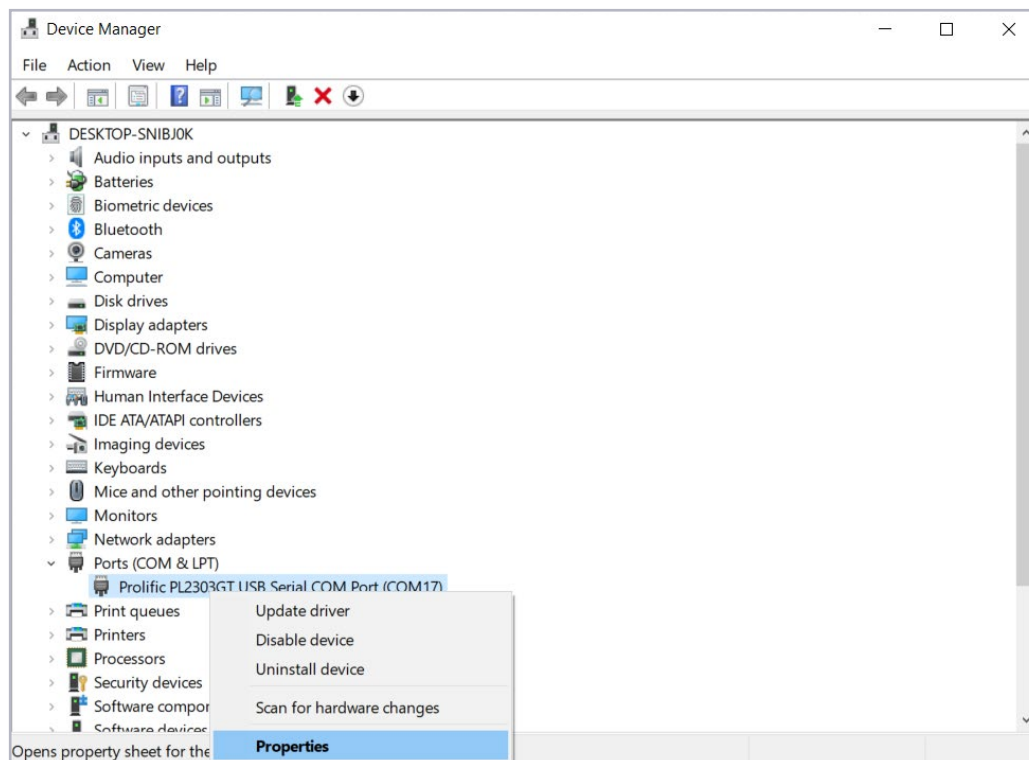


2. Select the file “PL23XX-M_LogoDriver_Setup_v208_20211221” and “Run” it. Give permissions to make changes and run all stages of the install.

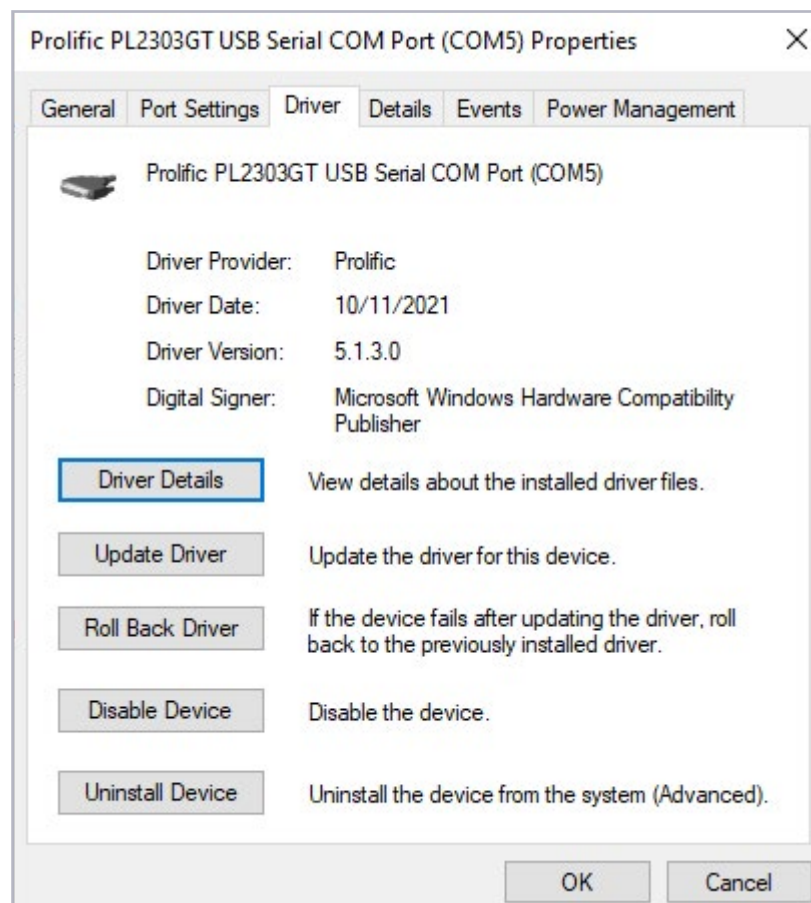


3. Restart your computer.
4. Connect the RS-232 Adapter to a USB port using the USB cable.
5. Open “Device Manager” on your computer and drop the Ports (COM & LPT).

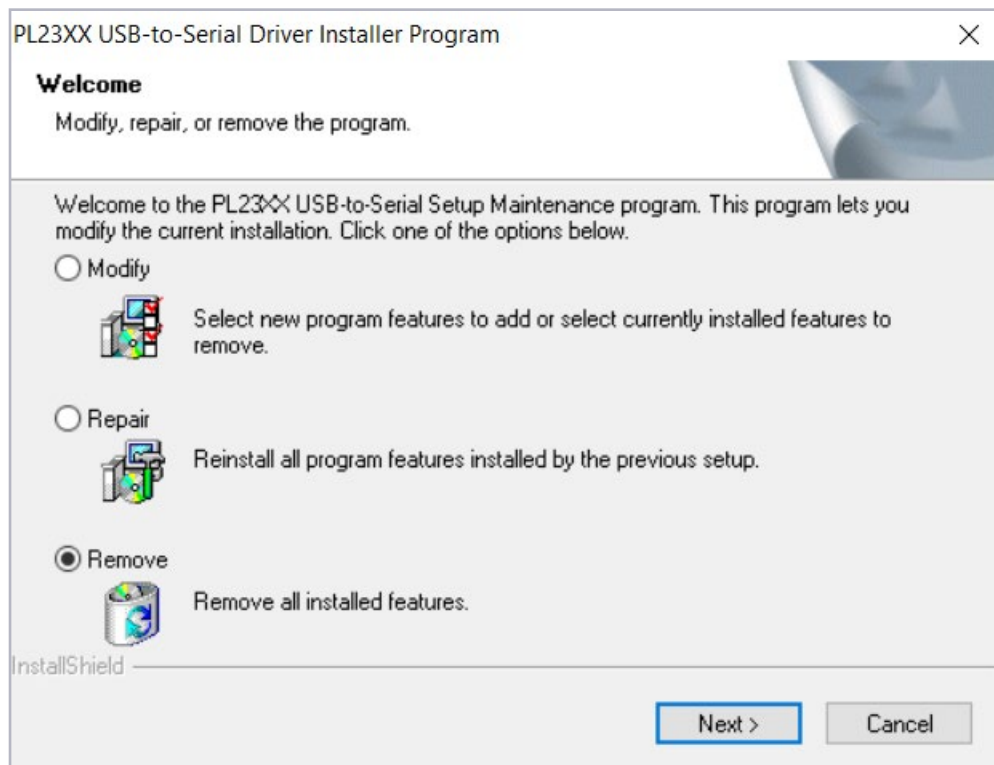
6. Right click on the “Prolific PL2303GT USB Serial COM Port” option and select “Properties”.



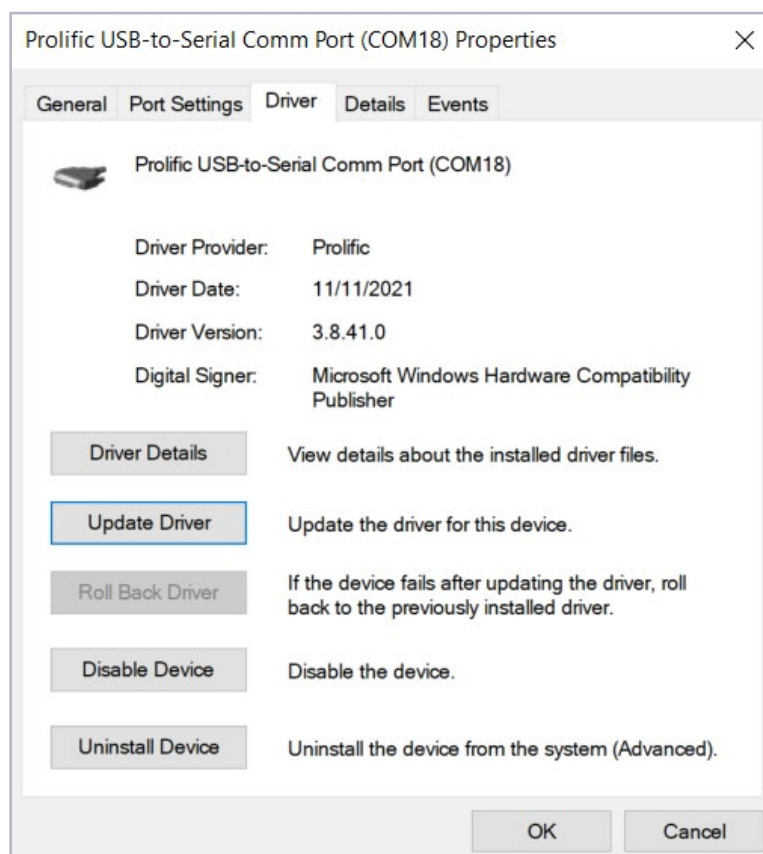
7. Check that the Driver installation has been successful by selecting the “Driver” tab. The “Driver Version” field should read “5.1.3.0” (to 5.1.6.0). If this is correct go to Step 8. If this is incorrect follow Steps from 7a as required. If you have previously followed 7a and 7b and your issue has not been resolved then skip to 7c.



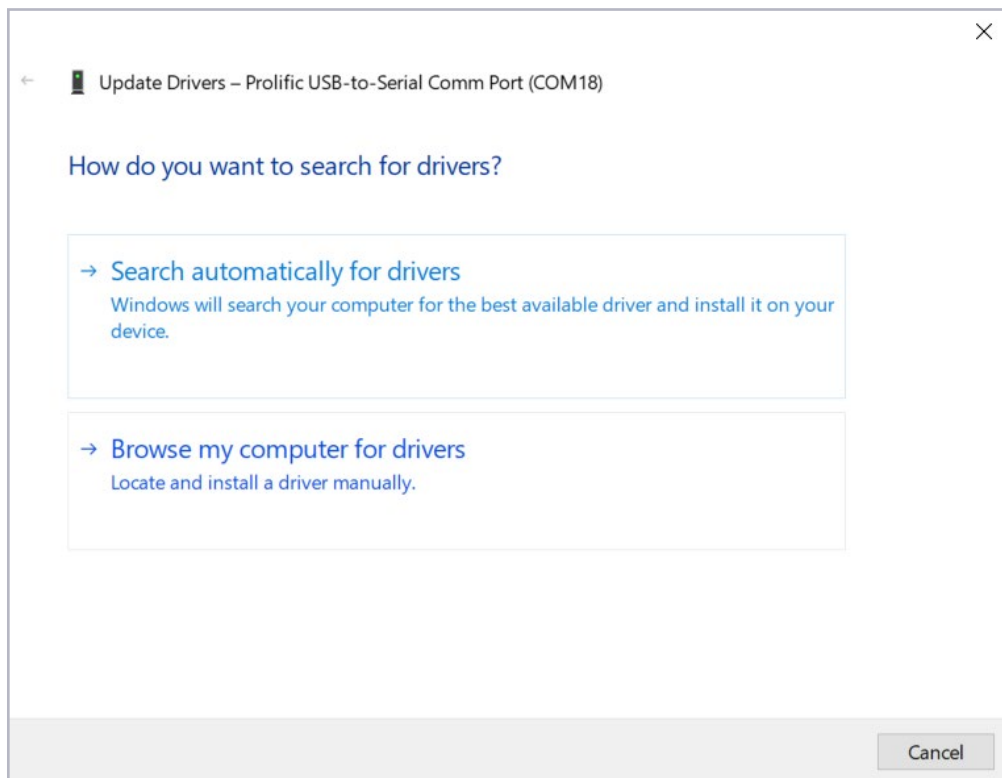
- a. If your Drivers have not updated run the Setup again from Step 1. This time it will offer you 3 options; “Modify”, “Repair”, “Remove” (Remove all installed features). Select “Remove”.



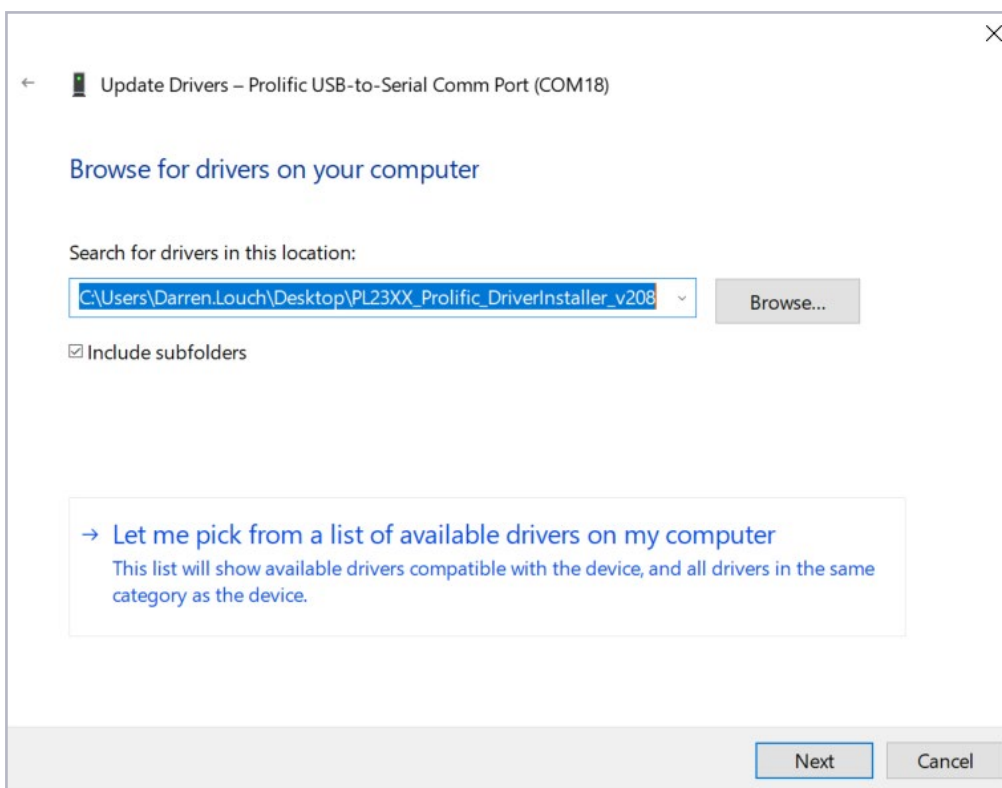
- b. Next run the Setup from Step 1 again and continue through to Step 7.
- c. If the Drivers are still not showing version “5.3.1.0” return to the “Driver” tab (see steps 5 to 7). Select “Update Drivers”.



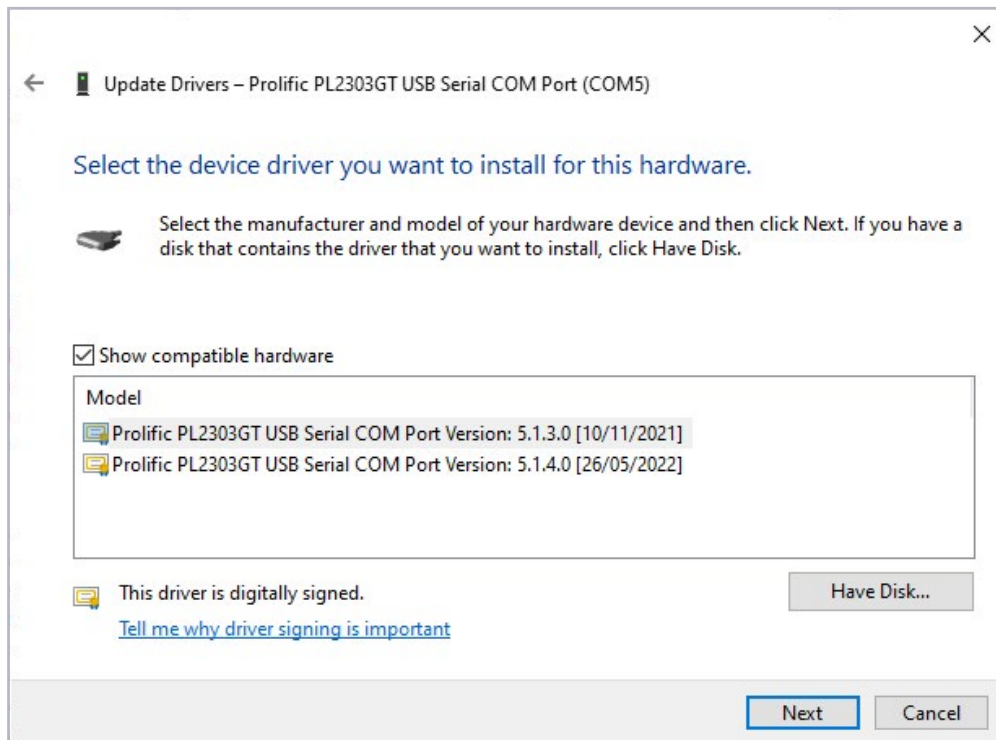
d. Select "Browse from Computer".



e. Select "Let me pick from a list of available drivers on my computer".



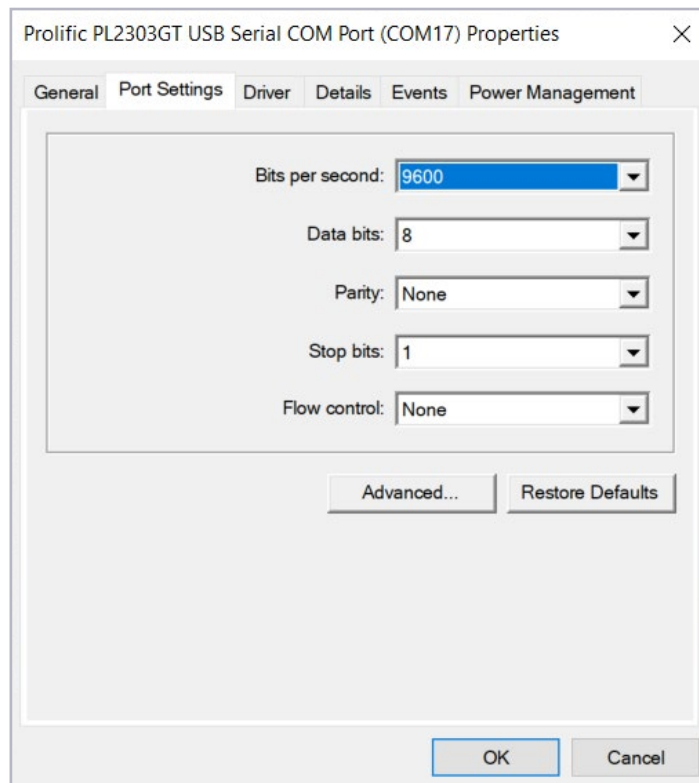
- f. Select “Prolific PL2303GT USB Serial Port Version; 5.3.1.0 [10/11/2021]” from the available options and select “Next”.



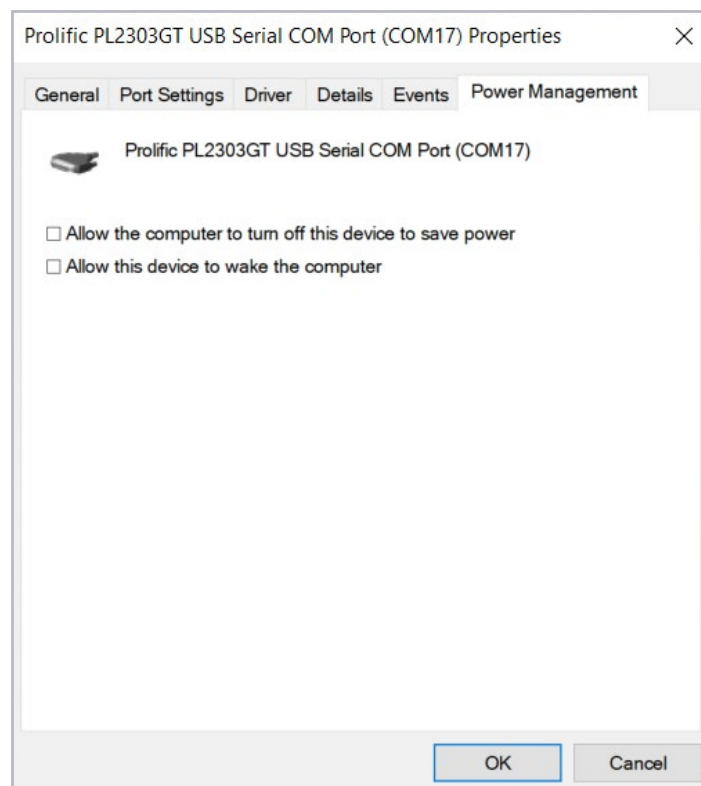
- g. Allow any requested system permissions and allow Windows to update the Drivers.



8. In "Properties" select the "Port Settings" tab and change "Bits per second" to 9600 and "OK".



9. In Properties select the "Power Management" tab and uncheck "Allow the computer to turn off this device to save power" and "Allow this device to wake the computer" and select "OK".



10. Follow the steps in the section "Connection Sequence for RS-232 Adapters".

Connection Sequence for RS-232 Adapters

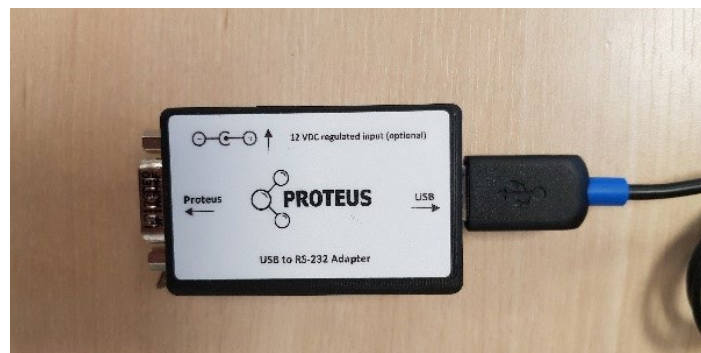
The PL2303GT chip may be sensitive to Input and Output sequence with frequent disconnection and reconnection. Please follow the relevant guide for Data Cable or Marine Cable as applicable. As a rule of thumb work outwards from the USB port. The Marine cable sequence should be used when connecting a Data cable using an additional 12v adapter.

Data Cable Connection Sequence

1. Connect the USB cable to the desired COM port.



2. Connect the RS-232 Adapter to the USB cable.



3. Connect the DB9 end of the Data cable to the RS-232 adapter and tighten the screws.



4. Connect the Data cable to the Proteus unit.



5. Your Proteus should now be connected.

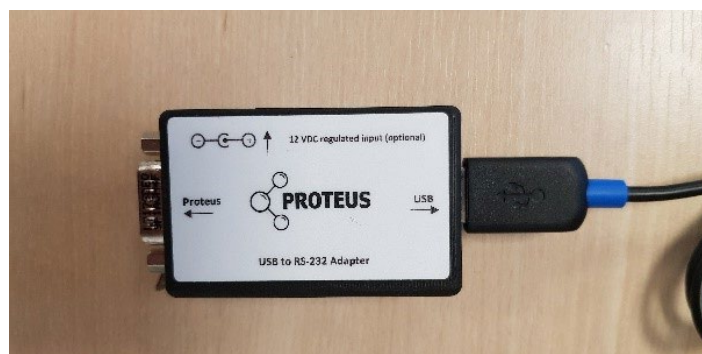


Marine Cable Connection Sequence

1. Connect the USB cable to the desired COM port.



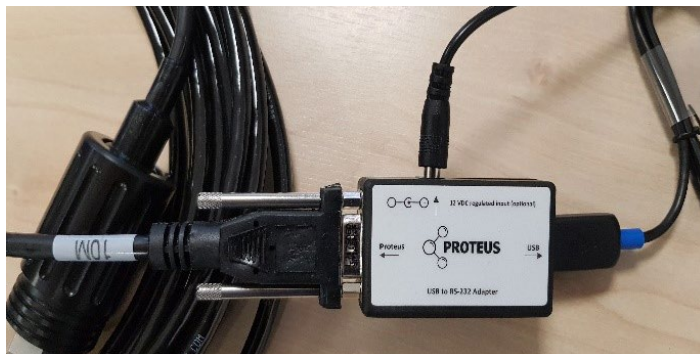
2. Connect the RS-232 Adapter to the USB cable.



3. Insert the 12v power cable in to the RS-232 adapter.



4. Connect the DB9 end of the Marine cable to the RS-232 Adapter and tighten the screws.



5. Connect the Marine cable to the Proteus unit and screw the holding cover in to position.



6. Your Proteus should now be connected.

